

CUSTOM CONTENT

APRIL 18, 2022

W O M E N O F I N F L U E N C E ATTORNEYS



WELCOME TO THE 2022 EDITION OF THE LOS ANGELES BUSINESS JOURNAL'S SPECIAL SECTION HONORING THE LA region's most influential women legal professionals, **Women of Influence: Attorneys.**

There are some particularly stellar attorneys in Los Angeles who happen to be women and we've alphabetically listed some of the very best of them here, along with details about their careers, practices and relevant recent successes they've achieved.

The women covered in these pages have been recognized for exceptional legal skill and achievement across the full spectrum of responsibility, exemplary leadership as evidenced by the highest professional and ethical standards, and for contributions to the Los Angeles community at large.

Congratulations to the extraordinary women included this year and thank you for your contributions to the people and businesses of our region.

Methodology: The professionals featured in these pages did not pay to be included. Their profiles were drawn from nomination materials submitted to the Los Angeles Business Journal. Those selected for inclusion were reviewed by the editorial department and chosen based on a demonstration of impact made on the profession and on the Los Angeles community.

WOMEN OF INFLUENCE: ATTORNEYS

**MARISSA ALGUIRE**

*Labor and Employment Practice Group Deputy Chair
Akerman, LLP*

Marissa Alguire is deputy chair of Akerman's national Labor & Employment Practice Group, a practice group of over sixty attorneys nationwide. She represents employers in all aspects of employment-related business matters and litigation in state and federal courts, and in arbitration. Her highly specialized practice focuses on the defense of management in wage and hour class action, PAGA, multi plaintiff and single plaintiff lawsuits, in claims of harassment, discrimination, wrongful termination, retaliation and wage and hour claims.

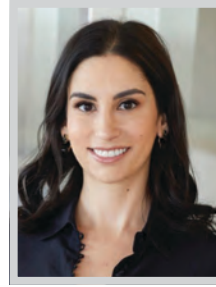
Alguire also defends clients in proceedings before the Department of Fair Employment and Housing, the Division of Labor Standards Enforcement, the Equal Employment Opportunity Commission, the U.S. Department of Labor, and the Employment Development Department. Marissa represents companies in a variety of sectors including in the manufacturing, airline, technology, entertainment, hospitality, retail, and healthcare industries. Alguire also regularly advises companies of all sizes and in all industries of best employment-related practices.

**KALLEY AMAN**

*Shareholder
Buchalter*

Kalley R. Aman is a shareholder and serves as one of Buchalter's officers of the corporation as the chief operating officer and chief legal officer. She is also a member of the firm's Labor and Employment, Litigation, and Hospitality, Restaurant, Food and Beverage Practice Groups. Aman specializes in employment litigation and counseling, commercial litigation, and complex and class actions. She represents employers in litigation involving claims of employment discrimination, wrongful termination, sexual harassment, retaliation, wage and hour violations, unfair competition, defamation and misappropriation of trade secrets.

Aman regularly counsels employers on wage and hour compliance, terminations, disciplinary matters, harassment and discrimination complaints, and compliance with federal, state and local laws and regulations. Aman represents clients across a wide variety of industries, including mortgage lending and banking, national restaurant chains, retail, apparel, beauty, manufacturing, artificial turf and real estate.

**HEATHER ANTOINE**

*Partner, Chair of the Trademark & Brand Protection Practice; Co-Chair of the Privacy & Data Security Practice
Stubbs Alderton & Markiles LLP*

Heather Antoine, a partner at Stubbs Alderton & Markiles, LLP, is widely considered to be one of the preeminent attorneys practicing in the intellectual property and privacy arenas. She regularly advises high-profile companies on the protection of their valuable IP and trademarks, in addition to guiding businesses through the ever-expanding patchwork of privacy laws, both domestically and internationally. Recent matters have included leading privacy team efforts at a Fortune 1000 company to comply with the California Consumer Privacy Act and California Privacy Rights Act; leading international brand protection strategy for major consumer products companies; and leading international privacy compliance efforts for major consumer products companies.

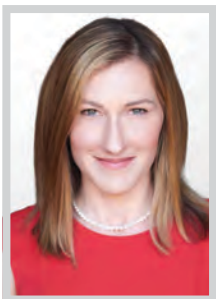
Antoine also serves as chair of the California Lawyers Association (CLA) Intellectual Property Section, and frequently speaks and writes about IP, Internet, tech, and privacy issues.

**LISA ATTY**

*Partner
McGuireWoods LLP*

McGuireWoods partner Lisa Atty has developed long-standing relationships with her clients to provide solid, well-reasoned, thoughtful legal guidance, assisting her clients in expanding and managing their property portfolios in support of their core businesses. Many of her client relationships have spanned a period of 20 years, providing depth of knowledge and institutional understanding clients rely upon and value. She has negotiated and finalized thousands of commercial leases and acquired and disposed of billions of dollars' worth of real property.

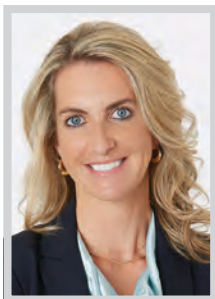
In preparation for Super Bowl 50, Atty represented a major communications company in negotiating and closing numerous license transactions with hotels, stadiums, and state and local governments resulting in a multicounty, multicounty network in and around San Francisco that provided seamless coverage and capacity before and during the big game. She continues to represent the communications company in building out and enhancing its network.

**KERI AXEL**

*Partner
Waymaker LLP*

Keri Curtis Axel practices white-collar criminal, government enforcement defense, and civil litigation. A former federal prosecutor and SEC enforcement attorney, Axel is a first-chair trial lawyer who helps clients navigate government investigations and fight criminal charges and has successfully litigated and argued many Ninth Circuit Appeals. Axel also draws on her extensive experience in tax, accounting, and the securities industry in representing executives, entrepreneurs, and financial services professionals and companies in FINRA matters and civil litigation.

Axel regularly provides insight into criminal and SEC investigations for the national media. Following government service, she was a solo practitioner and became a Waymaker partner in 2020. Axel brings an entrepreneurial mindset to her legal practice, leveraging technology to represent her clients efficiently and effectively. Among Axel's recent matters has been her work representing Virgil Griffith in a high-profile prosecution based out of New York.

**KOREN BELL**

*Partner
Larson LLP*

Praised for her advocacy and described by courts as "superb," and among "the best I've seen," Koren Bell is a bilingual Spanish-speaking lawyer who litigates high-stakes trials and appeals in courtrooms across the country. She represents prominent clients in high-profile white collar defense matters – including as counsel of record in a case she advanced to, and argued before, the U.S. Supreme Court – and individuals and companies as both plaintiffs and defendants in a broad array of complex civil litigation, including high-stakes commercial disputes and widely publicized civil rights suits, and in sensitive investigations.

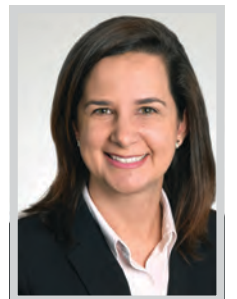
A former supervising federal public defender who has litigated high-stakes cases in courtrooms around the country, Bell's successes as a partner at Larson and throughout her impressive career, as well as her high profile successes as a litigator, have earned her the reputation for being one of the most influential lawyers of Los Angeles.

**STEPHANIE BLUM**

*Partner
Reuben Raucher & Blum*

Stephanie Blum, a certified family law specialist who has practiced exclusively in the area of family law for 25 years, supports those who face the turmoil, uncertainty and challenges of divorce. Though her first preference is always to mediate spousal, financial and custody issues, Blum is also a fierce and relentless opponent in a court of law.

Blum regularly speaks before professional organizations on various aspects of family law. She has frequently appeared on radio and television shows and has been featured and quoted in online and print publications. She also co-authored the book "Divorce and Finances: Know Your Rights Clearly and Quickly." Blum is active in her profession and the community, serving on the Executive Committee of the Los Angeles County Bar Association's Family Law Section and a long-time supporter of the Harriett Buhai Center for Family Law.

**PATRICIA BRUM**

*Partner
Snell & Wilmer*

Patricia Brum is a partner in the Los Angeles office of Snell & Wilmer, a full-service business law firm with more than 450 attorneys practicing in 16 locations throughout the United States and in Mexico. Brum, a Brazilian native, is a business litigator with extensive experience in representing companies (both large and small) in cross-border disputes and consumer class action matters. She is a strong advocate for the advancement of women attorneys in the legal profession and was recognized for her mentorship of women attorneys by receiving Snell & Wilmer's Mentor Award in 2021.

Brum draws upon her diverse and multi-cultural background to strategically help companies resolve their cross-border disputes. Her law practice is also focused on representing companies in the defense of consumer class actions, including but not limited to claims asserted under the Telephone Consumer Protection Act, Fair Debt Collection Practices and Deceptive Trade practices statutes.

Congratulations



**ALISON PLESSMAN
VICKI CHOU**

Women of Influence — Attorneys
—Los Angeles Business Journal

WOMEN OF INFLUENCE: ATTORNEYS

**MICHELLE CARPENTER**

Partner
Latham & Watkins

In April 2021, Michelle Carpenter was elected to Latham's Executive Committee, a nine partner group that oversees the global management of one of the largest law firms in the world. This achievement recognized Carpenter's consistently outstanding performance — in leadership and mentorship roles, her client work, and community and pro bono service — which has earned her universal respect among Latham's partners.

In her executive compensation, employment & benefits practice, Carpenter advises clients on a broad range of compensation arrangements and benefit plans across a variety of industries, with extensive experience working with public and private companies. She frequently advises on executive compensation and employee benefits matters for high-profile clients in their most complex transactions, such as mergers and acquisitions, financings, IPOs, and spin-off.

**APALLA CHOPRA**

Partner; Co-Chair Litigation Department;
Co-Chair, Labor & Employment Practice;
Chair, Colleges and Universities Practice
O'Melveny & Myers LLP

Apalla Chopra has established herself as a leading authority on sensitive internal investigations into high-profile allegations of employee misconduct and is one of the nation's go-to lawyers for Title IX investigations and follow-on litigation into their handling of sexual assault allegations. She also specializes in litigating complex multi-plaintiff and class action discrimination and wage and hour cases, with a breadth of experience otherwise representing clients in cases regarding employee allegations of invasion of privacy, wrongful discharge, discrimination, and traditional labor matters under the National Labor Relations Act.

Lauded for her legal expertise and focus on DE&I issues, Chopra displays the kind of foresight and nimbleness that consistently keeps her out front of the latest trends in labor and employment litigation. The past several years have been especially significant for Apalla in helping multiple universities, entertainment and other industry clients tackle an array of high-stakes litigation.

**VICKI CHOU**

Partner
Hueston Hennigan LLP

Vicki Chou, a recognized rising star, is a key member of the White Collar and Investigations team at Hueston Hennigan. She is a seasoned trial and appellate attorney and recently served as a Deputy Chief in the U.S. Attorney's Office in the Central District of California.

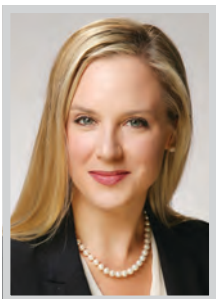
As an AUSA in the Central District of California, she represented the United States in hundreds of criminal cases, including computer and internet fraud, intellectual property, money laundering, bank fraud, tax fraud, and racketeering offenses. Many of her matters involved high-level, international coordination, including a case in which she successfully negotiated a first-of-its-kind joint investigative agreement with a European country. She has successfully tried more than ten cases as lead counsel and won every one of her appeals before the Ninth Circuit. She was awarded the Director of National Intelligence Meritorious Unit Citation for her work involving China.

**CARMEN COLE**

Partner
Squire Patton Boggs, LLP

Squire Patton Boggs' Labor & Employment Practice Group partner Carmen Cole works with employers to navigate complex employment law issues. Her prior experience as a human resources professional places her in a unique position to understand clients' issues from a legal and business perspective. She provides advice and counseling to employers on workplace issues, such as compliance with wage and hour laws, reductions in force, recruitment and hiring, employee classification, leave laws and terminations.

Cole's practice also consists of litigation defense and counseling. She aims to reach the most strategic and cost-effective result possible for her clients. She defends employers in cases involving individual violations of state and federal law, as well as defending class actions in areas such as wage and hour violations, California Labor Code violations, worker misclassification, wrongful termination, breach of contract and other employment-related torts.

**CLAIRE COLLINS**

Partner
Hanson Bridgett

Claire Collins is a highly regarded attorney who represents government agencies and private entities as general counsel, and in real estate, land use, and environmental matters. Her broad practice includes advising clients in compliance, transactions, and litigation, generally with a focus on infrastructure or non-traditional property challenges. Among her notable current client relationships, Collins currently serves as general counsel to Irvine Ranch Water District, the largest water district in Orange County. This water district is at the forefront of modern infrastructure and the future of water use.

Collins recently chaired a statewide committee of attorneys defending a novel case involving 81 other water suppliers across the state. The case asks whether fire hydrants are a part of water service or rather a part of fire department service. The answer to that question is worth billions of dollars to California's taxpayers and water users.

**SIMONE COLLINS**

Partner
Sklar Kirsh, LLP

Simone Collins is a partner of Sklar Kirsh LLP in the Corporate Department. Collins' practice focuses on mergers and acquisitions, joint ventures, and other complex investment and strategic business transactions. Collins has extensive experience advising private companies, private equity firms and their portfolio companies, business owners, and investors with the structuring and negotiation of domestic and cross-border transactions, including stock and asset acquisitions and dispositions, leveraged buyouts, strategic add-ons, debt and equity financings, and other general corporate and business matters.

Collins also has experience representing start-up entities, founders, and entrepreneurs with entity formation, early-stage financing rounds, and exit planning. She has represented clients in a broad array of industries, including media and entertainment, technology, hospitality/restaurants, retail and consumer products, professional services, and manufacturing and industrials.

**MICHELLE COOKE**

Leader of Intellectual Property Protection and Enforcement Practice; Chief Diversity and Inclusion Officer
Manatt, Phelps & Phillips, LLP

Michelle Cooke is a trusted and nationally recognized attorney for companies navigating global market expansion, brand development and entrance into the digital landscape, as well as those facing complex, multijurisdictional trademark disputes. She is a powerhouse attorney known for the breadth and depth of her knowledge of the intellectual property landscape both in the United States and abroad.

As the leader of Manatt's intellectual property protection and enforcement unit, Cooke counts well-known entertainment, multimedia, software, apparel and consumer products companies among her clients, offering them an unparalleled understanding of the full gamut of intellectual property issues through her truly global approach to preplanning, management and vigilance, as well as her masterful guidance through delicate brand rehabilitation issues. She has been consistently recognized for her robust and successful practice.

**ROBYN CROWTHER**

Co-Managing Partner, LA Office
Steptoe & Johnson LLP

Robyn Crowther, who serves as co-managing partner of Steptoe's Los Angeles office, has considerable first-chair trial and arbitration experience across a variety of litigation fields. Her arrival to Steptoe in January 2019 strengthened the firm's presence on the West Coast and added depth to the firm's litigation capabilities in LA.

Last year, Crowther first chaired two FINRA arbitrations for Charles Schwab & Co. as part of her long-standing relationship with the company. In each case, Schwab entirely prevailed. She also took on a lead role as counsel for Lexington Insurance Company, a subsidiary of the American Insurance Group, when Steptoe was retained to represent Lexington in litigation that had then been pending for six years and where the plaintiff sought in excess of \$100 million. Crowther helped develop a strategy to present key issues for resolution as a matter of law and the parties reached a settlement in principle.

RUSS AUGUST & KABAT

CONGRATULATIONS

Russ August & Kabat proudly congratulates
our partners and colleagues

IRENE Y. LEE and **CHRISTINE S. SHIN**

on being named among the

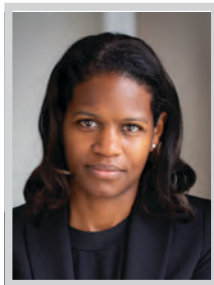
2022 WOMEN OF INFLUENCE: ATTORNEYS



Russ August & Kabat provides sophisticated, creative, and business focused intellectual property, mergers & acquisitions, real property transaction and litigation counsel to our clients.

www.RAKLaw.com | 310.826.7474

WOMEN OF INFLUENCE: ATTORNEYS

**RENEE DELPHIN-RODRIGUEZ**

Partner
Crowell & Moring LLP

Renee Delphin-Rodriguez is a partner in Crowell & Moring's Los Angeles office and a member of its Corporate and Health Care groups. Her practice focuses on mergers and acquisitions, joint ventures, equity and debt financing, corporate governance, and complex commercial agreements. Her clients span a wide range of industries (with a particular emphasis on companies within the health care industry).

Delphin-Rodriguez has experience representing special purpose acquisition company (SPAC) sponsors, investors and underwriters in initial public offerings (IPOs) and business combinations (deSPACs). She also advises large corporations on a variety of significant M&A and other strategic corporate transactions. She regularly assists public and private corporations on corporate governance, compliance, and general corporate matters. Delphin-Rodriguez has a unique blend of law firm and in-house experience. She served as assistant general counsel to a Fortune 500 health care company and general counsel to a health care management services organization.

**COLLEEN DEZIEL**

Managing Partner
Anderson, McPharlin & Connors LLP

Colleen Deziel's practice includes the defense of clients in negligence, other tort and contract based claims such as premises liability, products liability, motor vehicle and general negligence. Deziel has conducted seminars for insurance carriers concerning the latest local court procedures and practices within the Los Angeles County court system, and on the current judicial "hell hole" jurisdictions around the country, and regularly provides advice and insight to them on these issues.

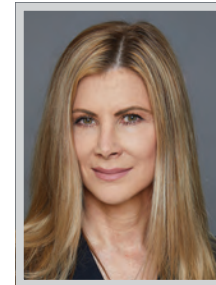
Deziel also regularly defends credit unions and other financial institutions in various matters, including class actions for alleged statutory violations. Further, Deziel has also published articles on the subject matter of elder abuse and mandatory reporting of elder abuse by financial institutions. Deziel's practice further includes the representation of management interests in various aspects of employment law including wage and hour, wrongful discharge and discrimination, harassment, and retaliation claims.

**SIERRA ELIZABETH**

Partner
Kirkland & Ellis LLP

Atop litigation and trial lawyer and one of the few African American female equity partners at a major law firm in California, Sierra Elizabeth has a distinct dedication to her clients and a passion for the law. As courthouses eased into reopening last summer, she returned to the courtroom expeditiously, clocking two lengthy jury trials back to back.

After winning a complete defense verdict on behalf of multinational conglomerate 3M in its second bellwether trial in the largest class-action MDL in history, Elizabeth jumped on a plane the same day to join another Kirkland team in Oakland, California, in a trial where Kirkland won a \$30 million verdict for client LivePerson, Inc. Three months later, she returned to Pensacola, Florida, and obtained yet another complete defense verdict on behalf of 3M. There are few attorneys that have handled as many trials in so short of time as Elizabeth.

**VICTORIA ERSOFF**

Partner
Riley | Ersoff LLP

Victoria Ersoff is one of the most well-known and accomplished trial attorneys in Los Angeles. An attorney since 1992, the vast majority of her career was spent at Wood Smith Henning & Berman, one of the largest and most accomplished civil litigation and insurance defense firms in the country. Ersoff rose to the top tier of her profession defending large corporations and individuals from a variety of high stakes claims. She has defended wrongful death actions, thousands of Legionnaires' disease cases, and personal injury claims brought against commercial property owners and developers.

In May 2021, Ersoff became a plaintiffs' attorney and, within months, had secured settlements worth more than \$10 million for families abused by negligent slumlords. She has been interviewed by numerous media outlets including a recent interview on KCBS news regarding a horrific slum housing case in South Central Los Angeles.

**LAURA FARBER**

Partner
Hahn & Hahn LLP

Laura Farber is a member of Hahn & Hahn's litigation and employment practice groups. She is an accomplished trial lawyer in employment and commercial litigation, and personal injury. She is also a noteworthy leader in many organizations, including the American Bar Association (ABA).

This year, Farber has co-chaired the ABA's Coordinating Group on Practice Forward that has undertaken one of the largest surveys of the legal profession to understand the impact of the pandemic on the legal workforce, which has had a disproportionate impact on women and parents of young children due to lack of childcare options. Also, the survey identified the impact on diversity, equity, and inclusion given racial injustices. Based on the survey results, the ABA adopted childcare policies and is lobbying Congress to implement such policies to improve economic outcomes for women, parents of children, and those providing family care for seniors.

**CONNIE FICKEL**

Partner; National Co-Chair, Professional Liability Practice Group; National Chair, Securities & FINRA Practice Group
Lewis Brisbois

Since the beginning of her career, Connie Fickel has maintained an extraordinary track record of success as an accomplished, dedicated attorney and strong leader. Joining Lewis Brisbois almost 10 years ago, Fickel emerged as a strong leader early in her tenure. She was the youngest woman attorney and the second youngest attorney overall to be elevated to equity partnership at the time that she earned the promotion. As a current co-chair of Lewis Brisbois' national Professional Liability Practice and chair of the firm's National Securities Litigation & FINRA Practice, Fickel leads large teams of attorneys who consistently achieve the objectives of several of the firm's clients. She regularly secures favorable results in high-stakes litigation.

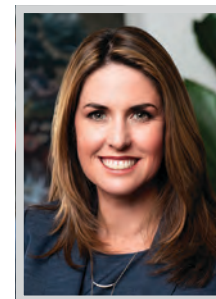
Fickel recently secured a respondents' award in an arbitration against a wealth advisor and member of a technology startup who was accused of making misrepresentations related to a client.

**SUSAN FIELD**

Partner
Musick, Peeler & Garret LLP

Susan J. Field is a partner in Musick, Peeler & Garret's Los Angeles office. Her practice principally involves representing insurers in complex insurance disputes on a broad range of issues arising under primary and excess policies and reinsurance coverages, with particular emphasis on general liability coverage claims involving environmental and other long-tail liabilities, personal and advertising injury coverage and errors and omissions insurance and the bad faith issues arising from such disputes. She provides insurance coverage counseling, and represents insurers as plaintiffs, as defendants and in the increasing number of inter-insurer disputes.

Field's substantial litigation practice includes matters before the California state and federal trial and appellate courts. She has also appeared as counsel of record in courts outside of California, including those in Arizona, Hawaii, and Nevada. A significant part of Field's practice includes mediation, both as an advocate for her clients and as a mediator.

**RACHEL FISET**

Partner
Zweiback, Fiset & Coleman LLP

Rachel L. Fiset is a co-founder and partner of Zweiback, Fiset & Coleman LLP. Her practice includes various state and federal civil and white-collar criminal matters, including government and internal investigations. She has achieved outstanding results for individuals accused of healthcare fraud, political corruption, bribery, SEC violations, real estate investment fraud, environmental violations, import/export violations, money laundering, copyright infringement and theft of trade secret.

Since forming Zweiback, Fiset & Coleman LLP in 2018, Fiset has been involved in several of the highest profile investigations and cases in the Central District of California. She also currently represents a defendant in a large criminal prosecution relating to fraudulently prescribed medication in a ninety-five count Complaint against 34 individuals. Recently, Fiset defended and achieved a declination from the Department of Justice on behalf of a chain of long-term care pharmacies.

WOMEN

OF

INFLUENCE:

ATTORNEYS

Munck Wilson Mandala congratulates **Yael Tobi** and **Jenifer Wallis**, recognized as Los Angeles Business Journal's 2022 Women of Influence.



Yael Tobi Partner

Business litigation, white collar defense and forfeiture, entertainment law, and real estate.



Jenifer Wallis Co-managing Partner

Commercial litigation, intellectual property, corporate law, and entertainment law.

Diverse Services. Cultural intelligence. Successful outcomes.

We are the difference | munckwilson.com
Los Angeles | Dallas | Austin | Houston | Miami



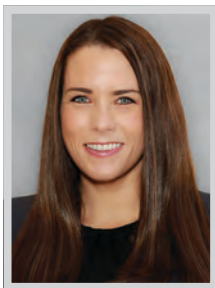
WOMEN OF INFLUENCE: ATTORNEYS

**JULIE R.F. GERCHIK**

Partner
Glaser Weil LLP

Julie Gerchik has proven to be a top litigator, focusing her practice on all types of complex matters including financial institution matters, securities litigation and regulatory matters, real estate and developer disputes, internal investigations, and entertainment, employment, technology, and IP matters.

In addition to being a top litigator, Gerchik has had a tremendous impact on the infrastructure and the culture of Glaser Weil. She is the hiring partner for the Litigation Department and the founder and chair of the Diversity, Equity & Inclusion Committee. Gerchik has embraced both roles, and among other accomplishments, has emphasized diverse hiring practices for the Litigation Department which have resulted in over 75% of the department's hires being diverse over the past three years. Additionally, under Gerchik's leadership, the Diversity Committee has hosted a number of diverse intra-firm cultural events geared toward education.

**MEGHAN GLASPY**

Managing Attorney
RMO LLP

Having previously served as a deputy district attorney, Meghan Glaspy brings extensive trial experience and has worked closely with clients through complex and emotionally-charged disputes. Glaspy brings that experience to RMO where she focuses her practice on probate disputes, including will and trust contests, breach of fiduciary duty claims, financial elder abuse protection, and contested conservatorships, representing beneficiaries, as well as individual, professional and corporate fiduciaries (administrators, executors, trustees and conservators).

Glaspy grew up in Los Angeles and graduated from University of California, San Diego with a B.A. in Literature and English. She studied law at Georgetown University Law Center, where she was a published author in the Georgetown Journal of Law & Public Policy.

**DEMETRIA L. GRAVES**

Founding & Managing Partner and
Certified Family Law Specialist
The Graves Law Firm

Certified family law specialist Demetria Graves opened her own family law practice, The Graves Law Firm, at the age of 25, just six months out of law school. She has offices in both Pasadena and Beverly Hills and is today considered a leading family law attorney and has received many accolades for her dedication to the field of family law as well as to the community.

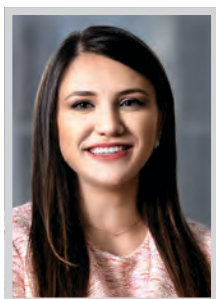
Graves hosts a podcast, "Legally Uncensored with Attorney Demetria L. Graves," available on Apple Podcast, addressing family law-related topics. In addition, Graves wrote and released a book in 2021 titled, "When Women Run the Firm: How to successfully launch and manage your law practice with confidence," which was a #1 new release on Amazon. Graves currently serves as the Secretary of the Family Law Executive Committee with the California Lawyers Association (vice-chair as of September 2021).

**MARYBETH HEYDT**

Partner
DTO Law

MaryBeth Heydt's career is a testament to uncommon leadership, insight, business acumen and keen ability among her peers in the commercial real estate industry. For over 25 years, she has been helping to shape the commercial real estate industry in Los Angeles and beyond, closing approximately \$1 billion in purchase and sale transactions around the country, and over \$2 billion in workout and lending transactions.

In the last twelve months, Heydt served as the managing attorney over a large commercial real estate loan LIBOR conversion project for two portfolio lender clients, modifying and closing almost 350 commercial real estate loans. During this time frame, she also worked on and managed almost one million square feet of corporate real estate leasing and purchase and sale transactions across the U.S. She also closed over \$100 million in commercial real estate loan transactions during this time frame serving as lead or local counsel.

**NICOLE HOWELL**

Counsel
Skadden, Arps, Slate, Meagher & Flom LLP

Nicole Howell is a highly regarded counsel in Skadden's Los Angeles Corporate Group. She advises strategic and financial buyers and sellers in connection with domestic and cross-border mergers and acquisitions and the formation of joint ventures and strategic partnerships. Her practice also includes corporate governance, private equity and securities law matters. Howell has deep experience in a wide range of transaction types and generally is industry agnostic, although most recently she has handled complex matters in the food and beverage and entertainment sectors.

Among her many highlights has been her work for European fresh produce company Total Produce in its combination with Dole Food Company and the concurrent IPO of the combined company on the NYSE under the iconic Dole brand. The first-of-its-kind transaction was the largest fruits and vegetables deal in history, creating a global, vertically integrated company with estimated combined 2020 revenue of approximately \$9.7 billion.

**TERESA HUGGINS**

Partner
Waymaker LLP

Teresa Huggins handles complex commercial litigation at both the trial and appellate level, with an emphasis on intellectual property, fintech and First Amendment matters. A partner at Waymaker LLP, she represents both plaintiffs and defendants and has argued in state and federal court, achieving decisive victories in multiple motions to dismiss and summary judgments. Huggins has a record of bringing cases to fruition and effecting numerous, favorable settlements. A Harvard Law graduate and a member of both the New York and California bars, Huggins continues to handle cases on both coasts.

Among her recent matters has been a win for consumer-facing companies employing electronic signature technology, Huggins achieved a complete victory for Sunnova Energy Corporation in a two-day arbitration, validating electronically executed end-user agreements. Based on the evidence and argument presented, the arbitrator summarily denied all claimants' claims.

**STEPHANIE HURST**

Partner, Los Angeles Office
Mayer Brown LLP

A key partner in Mayer Brown's Los Angeles-based Corporate & Securities practice, Stephanie Hurst has played a leading role in expanding the practice's capabilities and client roster and increasing its diversity. She has worked on dozens of innovative and complex deals, involving multiple jurisdictions and in evolving and emerging areas, including tech and Environmental, Social, and Governance (ESG). Hurst has become a go-to lawyer advising California-based companies on corporate-related ESG matters.

Hurst spent nearly two years in Mayer Brown's Hong Kong office, where she advised on capital markets and M&A transactions and was seconded to serve in the in-house legal department at a major global bank. Following her secondment, Hurst moved back to LA in 2015 and expanded the team's work in targeted growth areas key to the LA market, including in-bound Asian investment in the US, with a focus on Korea matters, tech/entertainment and ESG.

**SARAH KELLY-KILGORE**

Managing Partner, Los Angeles Office
Greenberg Gross LLP

Managing partner of Greenberg Gross LLP's Los Angeles office, Sarah Kelly-Kilgore has built a reputation as a highly skilled and innovative trial and appellate lawyer with the ability to persuade judges and juries in cases with the highest stakes. Clients have come to know Kilgore for her ingenuity, skill and leadership, with one of the firm's most high-profile clients praising her as a platinum attorney who "performs well beyond her experience."

Kilgore is co-lead counsel in landmark lawsuits filed for the Trustee of the PG&E Fire Victim Trust against former PG&E vegetation management contractors for their responsibility in contributing to the causes of deadly wildfires of 2017-2019 in Northern California. The Fire Victim Trust will distribute the funds to the 70,000 victims who lost their homes and businesses in the fires. Recoveries obtained for the Fire Victim Trust will be for the benefit of the fire victims; damages could exceed \$750 million.

**Lewis Brisbois congratulates
Jana I. Lubert and Connie M. Fickel
on being selected as Women of Influence
by the *Los Angeles Business Journal***



Jana I. Lubert



Connie M. Fickel

Lewis Brisbois congratulates Los Angeles Partners Jana I. Lubert and Connie M. Fickel, as well as all the other exceptional women attorneys who have been named Women of Influence by the *Los Angeles Business Journal*. Through their hard work and leadership, Jana and Connie have consistently demonstrated commitment to their clients and inspired their colleagues. We are proud and privileged to count them as valued role models, mentors, and leaders at Lewis Brisbois as they receive this well-earned recognition.



WOMEN OF INFLUENCE: ATTORNEYS

**CHRISTIANNE KERNS**

Managing Partner
Hahn & Hahn LLP

Christianne Kerns is the first female managing partner of the prestigious 121-year-old Pasadena-based law firm, which has transitioned from a historic “old-line firm” into a majority woman and minority-owned firm. As managing partner, Kerns is responsible for managing day-to-day business operations, developing, implementing, and driving organizational goals, procedures, and policies, managing firm lawyers and the director of administration, collaborating with other partners and maintaining positive client relationships.

Kerns and her team handle sophisticated financing transactions and restructure; manage complex commercial business relationships and contracts, and lead multifaceted real estate deals and projects. Kerns is a trusted board member and advisor to boards of directors, equity holders, and C-suite executives with a track record of identifying and effectively addressing risks and legal issues and strategic and operational challenges with the overarching goal of optimizing results value and ROI.

**CHRISTIANE KINNEY**

President
Kinney Law, P.C.

Christiane Kinney is a successful music attorney in Los Angeles. However, the thing that really makes her stand out among others in her field is her resilience and creativity. When in-person events were being canceled left and right at the start of the pandemic, many panicked. Kinney’s creativity has kept her clients busy and making money. Kinney was able to shift her focus toward helping clients find ways to instill community and creativity inside of virtual reality experiences, bringing tech and artistry together to allow artists to continue performing live, engage with fans, and offer thought-provoking, creative music videos while remaining socially responsible.

Kinney helped build the legal infrastructure for BRCvr, an official virtual Burning Man Experience. She also became a certified NFT expert through Blockchain Counsel, and has continued to create opportunities for her clients to flourish in the wake of new technologies.

**LINDA KORNFELD**

Partner and Co-Chair, Insurance Recovery Practice
Blank Rome LLP

Lawdragon calls Linda Kornfeld, Blank Rome partner and co-chair of its nationally-recognized Insurance Recovery practice, a “card-carrying member of the ultra-elite club of insurance recovery specialists.” She is at the top of the highly competitive, male-dominated insurance policyholder bar, one of only six women ranked nationally by Chambers USA. Kornfeld has more than 25 years of experience representing corporate policyholders in high-stakes litigation, recovering hundreds of millions of dollars for her clients. She is well-known for her innovative approach, having on multiple occasions set precedents in court which created new law.

Kornfeld handles coverage matters that are frequently in the news, including data breaches, child sex abuse cases, wildfires, and other natural disasters. She and her team have reviewed hundreds of business interruption policies and developed nuanced arguments supporting coverage for businesses’ multibillion-dollar losses due to the COVID-19 pandemic.

**CAROLYN KUBOTA**

Partner
Covington & Burling LLP

Carolyn Kubota is a nationally acclaimed litigator with extensive first-chair trial experience and a near undefeated record in over 20 trials in state and federal courts. She draws upon her twelve years of experience as an Assistant U.S. Attorney in the Los Angeles U.S. Attorney’s Office when representing major domestic and international companies in their most high-stakes investigations and litigation matters.

Among Kubota’s recent notable efforts has been her work co-leading a team of Covington lawyers serving as national litigation counsel for the United States Olympic & Paralympic Committee in more than 500 cases brought by gymnasts who were abused by Larry Nassar. On December 15, 2021, following two years of mediation, the U.S. Bankruptcy Court for the Southern District of Indiana approved a settlement that included a \$380 million payment to compensate the survivors – primarily funded by insurers, and the dismissal of all related cases pending against the USOPC.

**IRENE LEE**

Partner
Russ August & Kabat

Irene Lee is a partner at Russ August & Kabat, where she focuses her practice on all aspects of intellectual property, including patent, trademark, copyright protection through registration, enforcement, and licensing. Lee has extensive experience in trademark and copyright prosecution, litigation, and licensing with an emphasis on global brand expansion and content management. As a registered patent attorney, she counsels clients concerning patent protection and monetization with an eye toward building value to their overall business focus.

Clients from varying industries seek and heed Lee’s advice and her peers respect her opinion because of her considered legal analysis balanced against her pragmatic approach to legal problems with real-life solutions. In the past 12-18 months, she has managed over 5,000 brands and attendant rights as part of her role in managing IP portfolio for clients such as The Honest Company, among others.

**JENNIFER LEVITT**

Partner
Simpson Thacher & Bartlett LLP

A recognized leader in Simpson Thacher’s Banking & Credit and Fund Finance Practices, Jennifer Levitt is among the rare corporate advisors in the world that have amassed such a diversity and depth of experience in structuring, negotiating and executing sophisticated financings for private equity sponsors. Especially adept at handling new and complicated matters, Levitt is on the forefront of the development and implementation of net asset value (NAV) financings, subscription (or capital call) facilities, margin loans and other forms of back-leverage, which help facilitate and support investment activities for a broad range of investment vehicles.

Widely recognized as a pioneer in the space, Simpson Thacher’s Fund Finance Practice complements the firm’s preeminent Banking and Credit and Private Funds practices. A vital member of the team, Levitt regularly leads the credit team addressing financing elements that arise in fundraisings. She routinely advises private equity powerhouses on their sponsor-level transactions.

**MEG LODISE**

Partner
Sacks, Glazier, Franklin & Lodise LLP, AØ

In her 30-plus year career, Meg Lodise has established an impressive reputation for successfully handling some of the most complex and high-dollar trusts and estates disputes. Lodise’s work stands out in the legal marketplace, not just for her successes on behalf of clients, but also for the ways in which she’s helping to shape the future of trusts and estates law.

Among her high-profile representations and underscoring her respect in the trusts and estates community, Lodise was appointed by the Probate Court as Guardian Ad Litem for the minor children of entertainer Michael Jackson, a responsibility she carried out soon after Jackson’s death in 2009 and concluded in February 2020, with his youngest child, Prince Michael Jackson II turning 18. As the incoming secretary of the American College of Trust and Estate Counsel, Lodise works to improve laws, procedures and professional responsibility in connection with trust and estate law.

**JAYME LONG**

Partner
DLA Piper

Jayme Long is a first-chair trial attorney who has tried cases for some of the largest companies in the world. She serves on multiple national trial teams in high profile product liability, premises liability and mass tort cases around the country. She represents clients in the energy, manufacturing, medical and safety industries globally, and in state and federal courts in the United States.

Often the only woman lead trial lawyer in the courtroom, Long has developed a reputation for excellence in the area of civil litigation defense. She has taken multiple cases to verdict and has obtained three directed/nonsuit verdicts. She has several published and unpublished appellate decisions, in which the appellate court upheld her favorable judgments, including four decisions in the last two years. Other recent successes include prevailing in a coordinated toxic tort action against cross-border refinery workers after multiple bench trials, appeals, and petitions to the California Supreme Court.

WOMEN OF INFLUENCE: ATTORNEYS

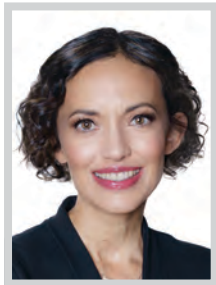


JANA LUBERT

*Los Angeles Co-Managing Partner; National Chair, D&O Practice; Firmwide General Counsel
Lewis Brisbois*

Jana Lubert is an accomplished leader within Lewis Brisbois and the legal industry as a whole. She stands out as a talented and dedicated attorney who consistently achieves outstanding results on behalf of her clients, while advocating on behalf of women attorneys and succeeding in her various prominent roles at Lewis Brisbois, one of the largest law firms in the United States.

Lubert has served as co-managing partner of Lewis Brisbois' Los Angeles office, the firm's first and largest office, since 2018. Moreover, as a voting partner on the firm's 11-person national Management Committee since 2017, Lubert is the first woman to hold this position at the firm. Furthermore, as general counsel for Lewis Brisbois, Lubert regularly provides sound, trustworthy legal advice to more than 1,600 lawyers and other business professionals nationwide.



ANGELA MACHALA

*Los Angeles Managing Partner
Winston & Strawn LLP*

Some of Angela Machala's most striking case-related career accomplishments to date involve successfully getting criminal charges dropped against her clients before trial, against all odds. Her track record is due in part to her diligence in researching and investigating these cases, as well as her finely honed ability to use the resulting facts to educate and persuade prosecutors of her clients' innocence.

In 2020, Machala helped to successfully secure a rare post-indictment dismissal of all criminal charges against her client in a closely watched theft of trade secrets case in the Northern District of California. Continuing this pattern of success, she also obtained a declination from the U.S. Attorney's Office in the Southern District of New York on behalf of a designated "target" in an insider trading investigation – an extremely rare decision, particularly for the U.S. Attorney's Office in that district, which rarely backs off such cases.



NINA MARINO

*Partner
Kaplan Marino PC*

Nina Marino's complex litigation and white-collar crime practice is national and international. She negotiates with the U.S. Department of Justice, state attorneys general, District Attorneys, and Interpol in her defense of individuals alleged to be involved with Medicare fraud, Foreign Corrupt Practice Act violations and tax, cyber and other crimes. Quite simply, Marino likes to save people. Right from the start, clients understand that she takes their cases as personally as they do.

Marino's presentations before U.S. Attorneys introduce new perspectives, compelling context and workable paths to resolution. Her unconventional combination of caring, integrity and formidable lawyering has earned her a national reputation and recognition. She discovers the shades of gray behind prosecutors' black-and-white arguments to shine new light on her clients' circumstances. Her team-driven, meticulously prepared strategies have repeatedly helped clients reach their objectives – from staying out of prison to defending allegations all the way to trial.



MARIANNE MARTIN

*Partner
Jeffer Mangels Butler & Mitchell*

Marianne S. Martin has led negotiations on financing transactions of collectively well over \$500 million over the past two years, and throughout her career has been engaged in restructuring and financing transactions of collectively well over \$1.5 billion. Her beginnings as a large-scale corporate bankruptcy and restructuring lawyer in New York honed her ability to maneuver in complex, high-stakes financing and restructuring situations, and she has spent nearly ten years in California developing that experience into a nuanced and highly sophisticated commercial finance practice.

Known as someone who can "cut to the chase" in complicated situations, Martin has a rare ability to bring a multitude of constituents to the table to get deals done, particularly in contentious, nuanced and fast-paced situations. Marianne also serves as a key internal resource for the firm on financing matters, and works closely with the firm's opinion committee on opinion-related matters.

Buchalter

congratulates

Tanya Viner & Kalley Aman

Women of Influence: Attorneys

Los Angeles Business Journal

Tanya Viner
Shareholder

Kalley Aman
Shareholder



WOMEN OF INFLUENCE: ATTORNEYS

**KATHRYN McCANN***Partner*

Ellis George Cipollone O'Brien Annaguy LLP

For the past 15 years, Kathryn McCann has focused her legal career on representing national and global companies in large, complex and class action litigation in the areas of business, real estate, contracts, securities fraud, premises liability, corporate tort, products liability and entertainment. She has handled cases in California federal and state courts, the California Court of Appeal, the US Court of Appeals for the Ninth Circuit, as well as before various arbitral tribunals and administrative hearing boards.

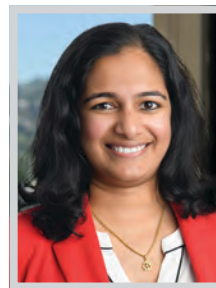
McCann currently manages a team of attorneys representing a large municipal government in several related, complex matters in federal, state and bankruptcy courts. As head of this team, she directs day to day litigation work, and also oversees overall litigation strategy for each case. Her varied cases have given McCann insight into how best to provide not only top notch, but personalized legal service to large corporate and governmental clients.

**ANN MARIE MORTIMER***Managing Partner, Los Angeles; Co-Head, Commercial Litigation Practice*

Hunton Andrews Kurth LLP

Ann Marie Mortimer, co-head of Hunton Andrew Kurth's commercial litigation practice and founder and managing partner of the firm's Los Angeles office, is at the forefront of complex litigation in the male-dominated field of cybersecurity. She counsels Fortune 50 companies – among them giants in their respective industries – on the novel challenges and regulations endemic to our increasingly virtual world, simultaneously leading the way for other women in the data privacy realm.

Mortimer's combination of legal technical brilliance blended with bottom-line pragmatism is the reason clients return to her repeatedly to navigate their most challenging class action, commercial and data breach cases. Over the last year alone, she has doubled her caseload for Facebook (now Meta Platforms, Inc.), spearheading at least a dozen statutory actions; and has taken on multiple new matters for a telecoms giant involving complex class actions.

**POOJA NAIR***Partner*

Ervin Cohen & Jessup LLP

Pooja Nair is a go-to attorney for the food, beverage, and hospitality industries and handles partnership disputes, false advertising claims, employment disputes, and administrative law issues. While she is a talented and experienced litigator, her specialty is finding creative means to ensure that legal problems have practical business solutions.

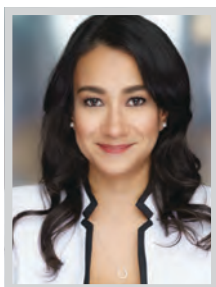
Some key representative matters over the past two years include her work handling a partnership dispute on behalf of the lead investor in a restaurant, which was resolved pre-litigation with a favorable settlement for her client; and her successful work representing a restaurant group against an insurance company. She also advised two related winter sports companies through a highly contentious partnership dispute that was resolved pre-litigation. She also assisted over a dozen small and mid-market food and beverage clients in addressing false advertising complaints and potential complaints related to product labels, advertising and reviews.

**ANGEL NAKAMURA***Partner*

Arnold & Porter

Angel Tang Nakamura's practice focuses on the management of complex, multi-party litigation, including class actions and multi-district litigation. Her clients include pharmaceutical, medical device and consumer product manufacturers. Her work over the years has included pre-trial assessments and consultations, working with state and federal regulators, crisis management and recalls, discovery strategy and management, expert witness development, and end game strategy.

Nakamura has acted as national counsel in a number of high profile MDL cases, including those involving heparin contamination, diet drugs, tobacco products, testosterone replacement therapy, and opioid medications. In this role, she has developed significant expertise in managing high volume, multi-jurisdiction litigations, where she is highly skilled at developing national trial and discovery strategies, and local counsel and joint defense group management plans. Many of her cases involve thousands of cases pending in various jurisdictions at the same time.

**SABRINA C. NARAIN***Partner & Trial Attorney*
Sanders Roberts LLP

Sabrina Narain is an ambitious Hispanic & Asian Indian attorney breaking barriers in Los Angeles' auto manufacturing litigation space, becoming the first female partner in March 2020 after only three years at the diverse boutique legal firm Sanders Roberts, LLP where she primarily defends corporations in consumer protection matters, including breach of contract, fraud claims and product liability. Her experience in the auto industry has led to the creation of new and technically advanced litigation strategies to successfully defend the severity of consumer warranty cases in California, specifically those cases alleging fraud and misrepresentation which has also assisted her in strengthening her general liability practice.

Narain is actively involved in the legal and local community, including the academic sector. Since 2019, she has also served on the advisory board of Fullerton College's Paralegal Program where she oversees and advises the Board on curriculum, operations and compliance.

**JENNIFER NASSIRI***Partner*

Sheppard Mullin Richter & Hampton LLP

Jennifer Nassiri counsels secured and unsecured creditors, creditors, committees, licensors and licensees of intellectual property, landlords and tenants, equity holders and corporate officers, and special committees among others, in the health-care, retail, real estate, manufacturing, automotive and media and entertainment industries, in connection with pre-bankruptcy planning, restructurings and liquidations, both in Chapter 11 and out of court.

Nassiri has significant experience counseling Chapter 11 debtors, lenders, special servicers, property owners, asset purchasers, insiders and Chapter 11 trustees, including liquidating trustees in a broad spectrum of complex issues in bankruptcy. Her practice includes Chapter 11 plan litigation, 363 sales, valuation disputes, debtor-in-possession financing, preference and fraudulent transfer litigation and assignments for the benefit of creditors. She frequently counsels intellectual property licensors and licensees in distressed transactions and bankruptcy.

**ARAMEH O'BOYLE***Member*

Mintz

Arameh Zargham O'Boyle, member at Mintz, is a trailblazer and the first female partner in their growing LA office. In her 16 years of practice, O'Boyle has become one of the most sought after attorneys that product innovators and manufacturers in the pharmaceutical, medical device, personal care and cosmetic sectors rely on when faced with potential or actual litigation.

O'Boyle concentrates her practice on defending companies in product liability litigation and also represents life sciences companies in complex mass tort litigation. Some of her recent successful matters have included her work for a Fortune 200 global medical device manufacturer in all product liability litigation throughout California over the last 15 years. She also represents a leading manufacturer of all-terrain and utility vehicles in defense of product liability/personal injury matters in California; and a leading distributor of home fragrances in defense of product liability matters following a nationwide product recall.

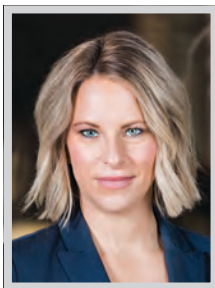
**COLLEEN O'BRIEN***Principal*

Scali Rasmussen, PC

Trial attorney and litigator Colleen O'Brien tries and resolves lawsuits and challenges related to toxic torts, catastrophic injury and complex employment matters. Her experience includes leading a range of civil litigation, from consumer fraud to defamation to chemical exposure and personal injury claims. O'Brien defends companies against plaintiffs' sophisticated claims involving long-term occupational injury, infectious disease, property damage and groundwater contamination. A former military prosecutor, O'Brien guides business clients as first chair, lead counsel in bench and jury trials in state and federal courts throughout the United States.

O'Brien has successfully tried more than 30 matters to verdict for her clients, both as a government attorney in criminal contexts and in private practice. She is known for her skillful preparation and examination of medical and technical experts at deposition and trial. Her keen attention to detail and commitment to cases have helped clients settle their disputes efficiently and quickly.

WOMEN OF INFLUENCE: ATTORNEYS



ELIZA LANGDON OLIVER

Attorney

Hudock Employment Law Group

Hudock Employment Law Group associate Eliza Langdon Oliver is a litigator with more than 10 years of experience, much of it focused on employment law. She joined the firm full-time in 2018 and has become an integral part of the client service litigation team. She handles motions, including arguing motions for summary judgment; pleadings and discovery; and depositions. She also handles mediations for clients, attends case conferences, and makes other court appearances.

Oliver's experience includes wage and hour cases, FEHA discrimination, harassment and retaliation cases, and class actions. She practiced in several large international firms before joining HELG. She enjoys the close contact she has with clients, and the opportunity to brainstorm strategy. "We don't take a cookie-cutter approach," she said. "(We) are very analytical people. We really think things through and try to develop the best strategies for our clients."

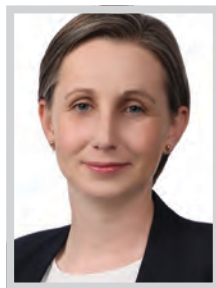


PURVI G. PATEL

Partner & Office Managing Partner, Los Angeles
Morrison & Foerster LLP

Purvi Patel has a defined niche that cuts across Morrison & Foerster's Class Actions + Mass Torts and Privacy + Data Security Groups, operating effectively at the intersection of privacy, consumer products and services, and emerging technology. Patel's vast experience handling class action litigation across industry sectors and the significant victories she has secured for clients defines her as one of the most skilled class action and privacy litigators of her time. Her successes include defeating class certification and obtaining summary judgment in some of the most plaintiff-friendly jurisdictions nationwide, and securing several walkaways for household-name companies in high stakes cases involving multi-million dollar demands.

Patel has set the standard for privacy and class action litigation representation, and is working on cutting-edge issues in class actions involving the collection, use, and disclosure of personally identifiable information. She is at the forefront of emerging privacy trends and regulations in California and beyond.



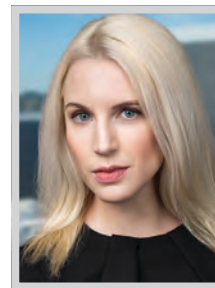
KELLY PERIGOE

Partner

King & Spalding LLP

Kelly Perigoe has over a decade's worth of experience in federal and state courts, from the pre-litigation to appellate phases, and for clients throughout the United States and internationally. She is regularly tapped to draft dispositive motions involving thorny issues and leads appellate strategy in clients' most critical matters.

Among Perigoe's recent successes has been her work handling an appeal before the Ninth Circuit of a dismissal of a copyright infringement action. The team at the district court defended VNG, Vietnam's first unicorn technology company, in a copyright infringement action alleging more than \$300 million in damages. Perigoe and team successfully defeated the action. She has also been representing Molina Healthcare, Inc. in the Seventh Circuit in a False Claims Act qui tam action alleging millions of dollars in treble damages. Perigoe's team successfully obtained a dismissal of the claims with prejudice in the district court.



KATHERINE PETTI

Partner

Ellis George Cipollone O'Brien Annaguey LLP

Katherine Petti focuses on complex civil litigation, especially in the area of media law and commercial litigation. She has significant state and federal experience in all aspects of litigation and arbitration, from motions to dismiss, to fact development, through the trial stage of litigation, and finally, to the appellate level and cert-stage and merits stage of the Supreme Court. She is also one of the rare attorneys in the country with experience with multiple multi-billion defamation matters, including experience at trial and the dispositive motion phase.

Petti is currently handling an ongoing defense of a major media organization for billion-dollar defamation matter and recently won a successful summary judgment decision in another multi-billion defamation matter. She was a trial team member at a multi-billion dollar defamation trial on behalf of a national television news organization in one of the most significant defamation cases to go to trial in years.

ERVIN COHEN & JESSUP LLP
ecjlaw.com



Pantea Yashar
Partner



Pooja Nair
Partner

Congratulations to our Partners **Pooja Nair** and **Pantea Yashar** on being Women of Influence.

WOMEN OF INFLUENCE: ATTORNEYS

**STACY D. PHILLIPS**

Partner, Matrimonial & Family Law
Blank Rome LLP

Stacy D. Phillips is one of the country's most well-known and respected family lawyers, handling primarily high-net-worth and high-profile divorce cases. She has guided clients through critical transitions for more than 37 years, including complex divorce actions, high-conflict custody cases, domestic violence matters, same-sex dissolutions, paternity cases, and pre-nuptial and post-nuptial agreements. Phillips is known for her skilled negotiation, aggressive advocacy, and compassion, whether in litigation, mediation, or collaborative divorce.

In one example of Phillips' success, she was retained by an internationally famous music star in a complex and dynamic child custody and support matter worth tens of millions of dollars. Phillips' role is central to the ongoing negotiations, which could erupt into litigation. She is managing custody and support laws in three countries, and has coordinated a separate confidentiality agreement to keep the mother silent and not compromise the privacy of the child.

**ALISON PLESSMAN**

Partner
Hueston Hennigan LLP

Alison Plessman has established herself as a top litigator, representing clients in high stakes matters, including securities fraud, copyright infringement, wildfire litigation, trade secret theft, breach of contract and professional negligence matters, and white collar defense.

In June 2021, Plessman obtained a significant victory for her clients in the California Court of Appeal, when the Court of Appeal affirmed a trial court decision she secured in July 2020 granting a preliminary injunction against SweeGen, Inc. in favor of its minority shareholders in an action asserting derivative and direct claims alleging breaches of fiduciary duties, self-dealing, and securities fraud. A few months prior, in February 2021, she further defeated SweeGen's demurrer on all grounds. Plessman also currently represents Pacific Power and PacifiCorp as lead counsel in seventeen wildfire matters, including a proposed class action involving more than 2,500 putative class members.

**DEBRA POLE**

Partner
Sidley Austin LLP

Debra E. Pole, an award-winning trial attorney with extensive jury trial experience in federal and state courts involving mass tort litigation, class action and complex litigation, leads the Sidley team that for years has represented Johnson & Johnson as trial counsel in its talc-related product liability litigation, and has obtained successes for our client over the years.

Pole is a partner in Sidley's Los Angeles Litigation group and a former member of the firm's Executive Committee. She trains, supervises, and manages lawyers and paraprofessionals in the Los Angeles Products Liability and Mass Torts practice and is recognized globally as a leader in the products liability area. She is perhaps best known for supervising numerous defense law firms, both domestically and internationally, involved in complex pharmaceutical and medical device litigation. Throughout her career, Pole has played a major role in many high profile trials and registered important victories.

**JENNIFER POST**

Managing Partner – Los Angeles
Thompson Coburn LLP

Jennifer Post is a partner in the Corporate and Securities Practice Group of Thompson Coburn, LLP. She is the managing partner of the firm's LA office and the first LGBTQ office managing partner of the firm. She is a member of the firm's Management Committee and is the vice chair of the firm's Emerging Company practice area.

Post serves as primary outside counsel to a variety of individuals, institutions and companies, including entrepreneurs, venture capital firms and emerging companies. Her practice encompasses all areas of general corporate, M&A and securities law. She also represents investment entities including venture capital firms in their investment work, formation, governance and maintenance. Post has a unique niche representing alternative asset and fintech lenders including venture debt lenders and hedge funds in private credit transactions with an emphasis in technology, fintech and consumer brands companies.

Congratulations

to all the esteemed

LABJ Women of Influence honorees

and to our Partner

Rachel L. Fiset

Women of Influence - Attorneys

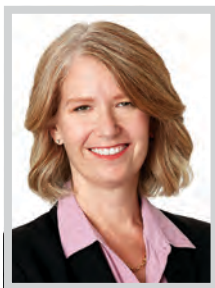
- Los Angeles Business Journal

Zweiback
Fiset &
Coleman LLP



zfclaw.com

WOMEN OF INFLUENCE: ATTORNEYS



HILARY POTASHNER
Partner
Larson LLP

A fellow of the prestigious American College of Trial Lawyers and the twice-selected former federal public defender for the Central District of California, Hilary Potashner is continually recognized throughout her nearly 30-year career as being among the top trial lawyers in California and the nation. Recognized by judges and peers for her unwavering commitment to high-quality, client-centered representation, Potashner is highly regarded by the bench and bar alike.

Since joining Larson in 2019 in her first private sector position after serving for years as the federal public defender, Potashner has taken on many of the firm’s top white collar defense matters, investigations, and complex civil cases, as well as achieving appellate victories, drawing upon her deep familiarity and impressive credibility with state, federal, and appellate courts to serve the advantage of her clients. She successfully defends individuals facing charges in both state and federal court in matters.



BRENDA RADMACHER
Partner, Litigation, Construction
Akerman, LLP

With over 25 years of experience working with construction contractors, construction managers, design professionals, developers, and owners, Brenda Radmacher’s multi-faceted practice emphasizes resolving complex construction disputes through negotiation, mediation, and when necessary, arbitration and litigation. Radmacher has extensive experience handling some of the largest construction disputes and has worked with her clients on projects with an extensive footprint ranging from the state of California, nationwide, as well as internationally. Real estate developers, construction companies, and design professionals regularly call on her legal and negotiation expertise to assist in course-of-construction disputes, construction defect issues, and risk management needs.

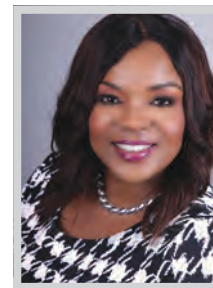
Radmacher’s expertise encompasses all genres of construction litigation matters, including building envelope, water infiltration, mold-related claims, mechanic’s liens, payment disputes, bid protests, and contract delay claims on both private and public projects.



ELSA RAMO
Managing Partner
Ramo Law PC

Elsa Ramo represents over 100 films and 50 television scripted and unscripted series per year, providing comprehensive legal services to producers, financiers, creators and owners of film, television, and digital content and projects across a range of budgets and production levels.

Having founded Ramo Law PC in 2005 on the Universal Studios backlot to enable up-and-coming filmmakers to bring their stories to life, Ramo now manages a bi-coastal firm of 18 attorneys and represents prolific producers including Imagine Entertainment, Kevin Hart’s production companies Laugh Out Loud and HartBeat Productions, Balboa Productions (Sylvester Stallone’s production company), Scout Productions (“Queer Eye”), Boardwalk Pictures (“Chefs Table”), Skydance, The Jim Henson Company, Yale Productions, and Hello Sunshine. Ramo’s leadership within the legal and entertainment communities extends beyond her successful Beverly Hills firm. She dedicates substantial time to mentoring women through various organizations such as PEFA.



ANGELA REDDOCK-WRIGHT
Employment Mediator, Arbitrator, Investigator
Reddock Law/Judicate West

Recently inducted into the prestigious College of Labor & Employment, Angela Reddock-Wright is an employment mediator, arbitrator, workplace, and Title IX investigator. She has practiced as an employment and labor law attorney for 25 years. After working as an employment litigator for 15 years, in 2011, she opened the Reddock Law Group and transitioned to becoming a full-time neutral.

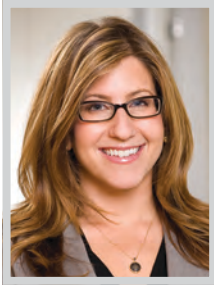
In addition, Reddock-Wright joined Judicate West in January 2020 as one of its neutrals. This is of particular significance as she is one of the only African-American women to be on a top mediation panel. She has mediated and investigated some of the most sensitive and high-profile cases involving private, public, and non-profit sector employers. Throughout the COVID-19 pandemic and the civil and political unrest of the last two years, she handled several race discrimination, sexual harassment and other claims in the gaming, technology, and other industries.



Thompson Coburn congratulates our LA office Managing Partner **Jennifer Post** on her recognition by the Los Angeles Business Journal as a 2022 **Woman of Influence**



WOMEN OF INFLUENCE: ATTORNEYS

**ARIEL ROBINSON***Partner*

Pircher, Nichols & Meeks LLP

Over the course of her 15-year legal career, Ariel B. Robinson has honed a strong real estate law practice, frequently handling significant portfolio transactions for private and institutional investors, owners and developers across a wide range of asset types – including office and industrial buildings, multifamily projects, land for residential development, retail and mixed-use projects.

Robinson launched her legal career at Pircher, Nichols & Meeks LLP in 2007 and has been on a rapid trajectory ever since. In 2020, she was appointed to Pircher's three-person Executive Committee to oversee the practice at the highest level and implement firm-wide initiatives. Robinson's client roster has included notable names such as AIG Global Real Estate, Blackstone, Farallon Capital Management, Harvest Properties, Osso Capital, Starwood and Walton Street Capital, and she currently plays a key role in the representation of one of the firm's largest and longest standing clients.

**JULIA ROMANO***Partner*

King & Spalding LLP

Julia Romano has the trial experience that few female attorneys her age possess, with more than a dozen high-profile jury trials under her belt after just 12 years of practice. As an associate, Romano quickly found her way into the courtroom and onto trial teams, performing true litigation and trial work.

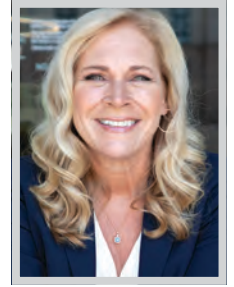
Romano is now second-chairing some of the most high-profile product liability trials in the country, including serving as trial counsel for Johnson & Johnson in the widely publicized litigation involving the company's iconic baby powder. She has helped obtain numerous other successes for Johnson & Johnson, including being on the trial team that won a defense verdict for the company in the first case in the country to go to verdict regarding plaintiff mesothelioma claims. She is also extremely dedicated to pro bono work as well as diversity and inclusion efforts both within and outside the firm.

**JENNIFER SAWDAY***Partner*

TLD Law

Jennifer Sawday's contributions and enthusiastic service to her profession as an attorney and law firm leader are demonstrated in her commitment to client service and education, selfless volunteer effort, and team attitude for everything she does. She has served the legal community since 2003, covering much of the Los Angeles area. As a very active member of numerous community-based and legal organizations, Sawday has served attorneys young and old, members of the public, and the members of her firm.

After graduating law school she worked for a firm that provided in-house counsel services to the Carpenters Union before breaking away and started her own firm. With every client she has encountered, rather than coddling them, she is fast, helpful, and knowledgeable. Sawday joined TLD as an associate and brought her practice over and later became a firm partner in 2014.

**JOLYNN SCHARRER***Shareholder*

Hunt Ortmann

Jolynn Scharrer is a shareholder at Hunt Ortmann who, for 34 years, specializes in the fields of labor and employment, and insurance counseling and litigation, business counseling and litigation, and construction matters. Scharrer leads the firm's Employment Law Group and insurance practice.

Scharrer's practice includes the representation of clients in all aspects of labor and employment. Her expertise ranges from counseling employers on employee issues and policy drafting to handling large scale wrongful termination issues and wage and hour, PAGA and class action litigation. Her transactional practice includes drafting employment package documents: employment contracts, independent contractor agreements, employee handbooks, company policies, separation agreements and other documents. She has developed an active practice in advising employers with regard to the ever changing landscape and regulation regarding COVID-19 in the workplace.

**ANDRADE
GONZALEZ
LLP**



We are proud to congratulate our partner
Sylvia Torres-Guillén

for being recognized in the *Los Angeles Business Journal's* 2022
"Women of Influence: Attorneys" list.

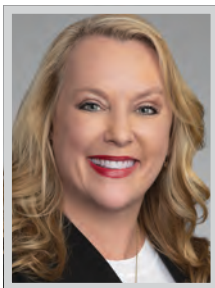
AGGRESSIVE WHEN NECESSARY, ALWAYS EFFECTIVE.

ANDRADE GONZALEZ LLP | andradefirm.com | 213.986.3950

EMPLOYMENT CLASS ACTIONS & WRONGFUL TERMINATION | INSURANCE COVERAGE | LITIGATION | CATASTROPHIC INJURIES

PUBLIC ENTITY & ADMINISTRATIVE LAW | WHITE COLLAR LITIGATION & INVESTIGATIONS | WRITS & APPEALS

WOMEN OF INFLUENCE: ATTORNEYS



MONICA SHILLING
Partner
Kirkland & Ellis LLP

Monica Shilling is a nationally-recognized transactional attorney. Her vast experience in corporate, mergers and acquisitions and securities law, along with her unique legal insight, not only make her a standout leader in law, but an invaluable business partner as well. At the forefront of creative structures and problem solving her whole career, Shilling has helped clients navigate the complex legal and regulatory developments amid challenging times. Over the last 18 months, she has worked dedicatedly to help clients raise capital and address liquidity needs, raising more than \$10 billion in a variety of transactions, including advising Ares Acquisition Corporation on its \$1 billion initial public offering.

In addition to helping clients, Shilling has been committed to addressing some of the inequalities brought to the forefront during the recent past. She provided pro bono legal counsel to a 10-year, \$90 million, industry-first initiative, “AltFinance: Investing in Black Futures.”



CHRISTINE SHIN
Partner, Head of Corporate and M&A
Russ August & Kabat

Christine Shin successfully started a boutique M&A practice in West LA which now services Fortune 500 companies, private equity firms, venture capital firms, emerging companies and both buy-side and sell-side clients in middle-market M&A transactions. Building her practice from the ground, Shin has acted as lead advisor to over \$1 billion dollars in value of aggregate transactions, while overseeing the practice which services such transactions.

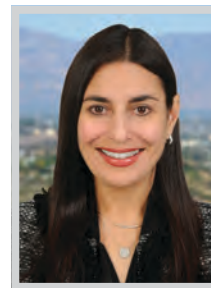
Shin has actively supported female-founded businesses and women CEOs since she started the corporate practice at RAK. She has put together successful liquidity transactions for women partners, CEOs, owners and founders with companies in the fields of healthcare, technology, manufacturing, cosmetics and retail. Beyond her day-to-day work, she has made a significant impact within the women business community and inspired women to believe that they can get real transaction value which is equal to those companies led by men.



LARA SHORTZ
Firm Recruiting Partner
Michelman & Robinson, LLP

As recruiting partner at Michelman & Robinson, LLP, Lara Shortz has been integral to the expansion of M&R into Texas – this year, she helped to open branches in Dallas and Houston – and the addition of several new lawyers across offices. In addition, she was a key member of the team that vaulted M&R into the upper echelon of associate compensation. All the while, Shortz continues to build upon her extraordinary employment practice, representing some of the most admired companies in L.A.

Recently, Shortz has been involved in a slew of notable employment-related matters, including guiding major hotel chains through furloughs and subsequent rehires in the wake of COVID-19. This includes over 30 WARN Act layoffs and rehires pursuant to applicable right of recall laws. She coordinated national COVID-19-related regulations and policies for major hotel properties and defended multiple Fortune 100 and 500 companies in notable #MeToo litigation matters.



NICOLE JANIGIAN SIMONIAN
Partner and Co-Chair, International Trade Practice;
Global Mobility Lead
Crowell & Moring LLP

Nicole Janigian Simonian has more than two decades of international trade and cross border transactional experience. She has significant experience serving as a strategic advisor and outside general counsel for companies, in connection with their market entry and global business expansion, operations and dispositions worldwide, with significant experience across Asia. She currently co-chairs Crowell & Moring’s International Trade practice and heads the firm’s International Employment/Global Mobility practice. In addition to her legal practice, Simonian is a director of the firm’s China consulting subsidiary, CMI Shanghai.

Simonian saw early on the importance of establishing a dedicated response team to address the COVID-19 pandemic. She was a founding member of the firm’s COVID-19 Working Group. She advises multinational companies on compliance with U.S. and international laws and regulations affecting employers and providing guidance on how to navigate regulatory complexities.

Congratulations to Lara Shortz

our Firm Recruiting Partner, recognized yet again as a

Woman of Influence

by the *Los Angeles Business Journal*



Along with the LABJ, Michelman & Robinson celebrates Lara and all she continues to achieve on behalf of the firm and our extraordinary clients.

WOMEN OF INFLUENCE: ATTORNEYS



ALICE CHEN SMITH
Managing Partner
Yoka | Smith, LLP

Alice Chen Smith is a first generation immigrant from Taiwan raised in the US by a single mom. As an attorney, she has become one of the go to young trial attorneys in Los Angeles. She has tried 12 first chair civil jury trials to verdict. She has never been one to back down from a fight. In one jury trial, Smith obtained a defense verdict while eight months pregnant. In another jury trial, she obtained a defense verdict during the height of the pandemic while everyone in the courtroom was fully masked.

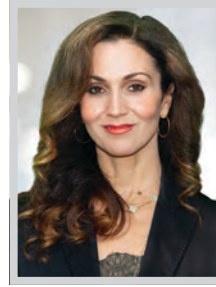
Based on her consistent results and stellar reputation in the community, Smith has been recognized as a master in trial by the LA chapter of the American Board of Trial Attorneys. Beyond courtroom skills, Smith has also achieved success on appeal. Her skills in the courtroom and effective leadership have seen Smith promoted to managing partner.



MARGARET SOHAGI
Managing Partner
The Sohagi Law Group

Margaret Sohagi's practice for the last 30 years has focused on assisting cities, counties, and other public agencies navigate the legal complexities of land use, California Environmental Quality Act (CEQA) and the National Environmental Policy Act (NEPA). Sohagi provides constructive, practical legal advice, working directly with lead agency counsel, staff, appointed elected officials. When necessary, she zealously defends lead agencies' land use approvals and environmental determinations in judicial proceedings, and frequently heads mediation teams in settlement discussions.

As a longstanding CEQA instructor for California's Continuing Judicial Studies Program, Sohagi has the unique opportunity to instruct Superior Court judges, appellate justices and court attorneys. Her land use and environmental law expertise, and ability to keep public agencies informed about the latest legal developments and trends, is also demonstrated through her frequent planning and legal conference presentations, extensive UCLA and USC teaching experience.



SANAZ (SUNNY) SOLTANI
Partner
Aleshire & Wynder, LLP

With more than 10 significant, published opinions in favor of her public agency clients and an emphasis on environmental justice including significant involvement in the remediation and redevelopment of the Signal Hill oil field, Sanaz (Sunny) K. Soltani serves as the first female city attorney in Carson. In her short tenure she has played a significant role in reshaping the trajectory of the community, including negotiating the \$1.7 billion NFL stadium deal with the Chargers and Dignity Health Stadium.

On behalf of the City of Carson, Soltani also negotiated a \$45 million settlement against the largest oil refinery on the West Coast and has been preserving the City of Carson's rent control ordinance against annual attacks. She also has successfully worked to ensure that industry pays its fair share in mitigating the negative environmental impacts it creates in the Carson community.



ROSE SORENSEN
Partner
Snell & Wilmer

Rose B. Sorensen is a corporate and securities partner in the Los Angeles office of Snell & Wilmer, a full-service business law firm with more than 450 attorneys practicing in 16 locations throughout the United States and in Mexico. Her practice includes mergers and acquisitions, divestitures, reorganizations, commercial finance, private placements, venture capital, corporate governance, telecommunications services, joint ventures, licensing and entity structure and formation. She has experience handling large-scale mergers and acquisitions, project and corporate financings and restructurings in industries including the technology, healthcare, food and beverage, manufacturing, retail consumer brands, business services, and construction.

Sorensen's background includes serving as general counsel of a private cable operator and internet service provider with operations throughout California, Arizona, and Texas, which helped shape her unique and balanced pragmatic approach in advising businesses on the complexities and functional considerations of their operations.



Leading the Way

King & Spalding congratulates our partners **Kelly Perigoe** and **Julia Romano** for being recognized as "Women of Influence: Attorneys."

kslaw.com

LATHAM & WATKINS LLP

Congratulations

to our partner and Executive Committee member Michelle Carpenter and all the honorees for *Women of Influence: Attorneys*



LW.com

Follow us:



WOMEN OF INFLUENCE: ATTORNEYS

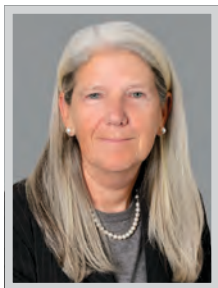


KALPANA SRINIVASAN

Managing Partner
Susman Godfrey LLP

Kalpana Srinivasan is Susman Godfrey’s first female managing partner in history and the first to be named so after climbing the ranks starting as Associate and is among a rare cadre of young, diverse females in California who are leading complex high-stakes matters involving cutting-edge legal issues.

Srinivasan is currently pursuing claims on a range of hot-button legal issues from illegal data scraping to trade secret theft to price-fixing to patent infringement. These cases are not only critical for her clients but will shape the boundaries of important legal questions in the area of IP protection and rights of consumers against anticompetitive conduct. She serves as co-lead counsel for HouseCanary in its misappropriation of trade secret, fraud and breach of contract case against Title Source. In 2018, she secured the fourth largest jury verdict of the year (and the highest IP jury verdict of the year) in the lawsuit.

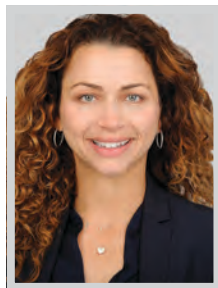


JULIA STRICKLAND

Managing Partner, Los Angeles Office
Stroock & Stroock & Lavan LLP

As chair of Stroock’s Financial Services Litigation, Regulation and Enforcement Group, a member of Stroock’s national Executive Committee and managing partner of its Los Angeles office, Julia Strickland is often the first attorney called when a financial services company needs anything from practical guidance to the fierce defense of contentious and high-stakes litigation and regulatory enforcement matters. She also is routinely sought out for counseling on federal and state regulatory compliance matters and the full range of issues arising from lending and servicing, retail banking, real estate and unfair and deceptive practices.

Strickland represents various BMW entities as well as Mercedes-Benz in a series of separate individual and putative class actions filed in state and federal courts in late 2021 and early 2022, alleging that the automobile manufacturers and finance companies are violating California antitrust and unfair practices laws, among other laws.

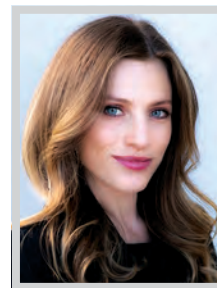


HANNAH SWEISS

Partner
Fisher Phillips

As a partner at Fisher Phillips, Hannah Sweiss serves as a key advisor to employers. Since the start of the COVID-19 pandemic, she has been an integral member of the firm’s COVID-19 Taskforce – a cross-disciplinary team of attorneys dedicated to advising employers on the many workplace law aspects of the global coronavirus pandemic. As a critical member of the team, Sweiss has continued to stay up-to-speed on the ever-changing legal landscape employers have faced during this uncertain time.

Sweiss has worked with countless employers across the country to implement COVID-19 safety protocols and vaccine policies. She has also continued to serve the community by providing timely information on changing federal, state and local laws. She has presented on nearly 150 webinars on COVID-19-related topics, contributed to at least 60 COVID-19 subject-matter articles since the pandemic begun and has been a go-to source for reporters.



CASEY SYPEK

Partner
Miller Barondess, LLP

Casey Sypek is a business litigator and partner at Miller Barondess, LLP who, in a ruling recognized as a DJ Top Verdict 2017, obtained ground-breaking jury verdict against University of California in gender discrimination case. She also represents 1.1 million Prius owners in federal court putative class action against Toyota. Sypek and her team defeated Toyota’s motion to dismiss; and, after 17 months of negotiations/mediation, reached a preliminary settlement for significant benefit of Prius owners.

Among her other high-profile work, Sypek represented Kovac Film against PMC Retaliators and Fluke Studios involving financing and production of a feature-length motion picture. PMC brought claims against Kovac for breach of contract. Kovac counter-claimed that PMC/Fluke failed to meet funding and created significant production issues. After a three-week arbitration, the arbitrator rejected PMC’s claims and awarded Kovac more than \$900,000 in damages for its counterclaims.

**Nossaman congratulates
Anna C. Tang, partner and
co-chair of our Corporate
Group, for her recognition
by the *Los Angeles
Business Journal* as a
2022 Woman of Influence.**



WOMEN OF INFLUENCE: ATTORNEYS



ANNA TANG

Partner; Co-Chair, Corporate Group
Nossaman

Anna C. Tang joined Nossaman in 2017 after a distinguished legal career in Melbourne, Australia. Tang serves as the co-chair of Nossaman’s Corporate Group. She is a leading corporate lawyer, highly regarded for her pragmatic commercial approach and for her capacity to work through complex and strategic legal issues and transactions.

Tang represents and advises emerging and established companies through a broad range of industries as transactional and general corporate counsel with respect to a wide variety of business transactions, including corporate structuring, joint ventures and partnerships, mergers and acquisitions, commercial agreements and negotiations and corporate governance. She works closely with clients at all stages of the business lifecycle – from setting up and buying a business through to capital raising, restructuring, disposing of businesses and assets and winding down a business.

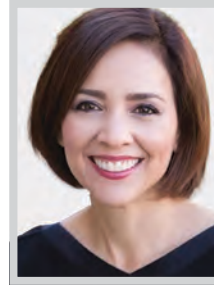


Yael TOBI

Partner
Munck Wilson Mandala

Yael Tobi is a partner at Munck Wilson Mandala, practicing in the firm’s IP and complex litigation groups. While she currently works as an attorney, there is not a singular label to define her talents or her successes. As a former professional tennis player who spent most of her childhood traveling around the world, Tobi gained understanding of various international cultures. Tobi’s cultural intelligence has enabled her to provide effective, successful representation to numerous foreign and domestic clients, including Fortune 500 corporations, public and private companies, law firms, and high-profile individuals in complex high-stake matters.

Tobi also has her real estate license and as a real estate broker, she has boosted Munck Wilson’s efforts to expand services to real estate clients in the LA market. Her skills in law and real estate give her substantial experience handling transactions and disputes related to all facets of the real estate industry.

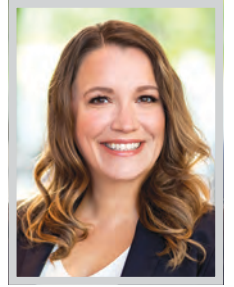


SYLVIA TORRES-GUILLEN

Partner
Andrade Gonzalez LLP

Sylvia Torres-Guillen of Andrade Gonzalez LLP has dedicated her career to addressing societal inequities and fighting for civil rights and social, racial, environmental, and economic justice. Beginning her career as a federal public defender for almost two decades, her practice presently consists of complex commercial litigation, white-collar crimes, regulatory and corporate investigation matters, sexual harassment and employment discrimination, and catastrophic personal injury cases.

Torres-Guillen has significant experience in federal, state, criminal, and civil cases, including high-profile cases such as the first federal prosecution of an internet hate crime case. With 40 trials in federal court, she uses her commanding leadership skills and a tenacious spirit to achieve remarkable results; in two cases alone, she successfully obtained settlements totaling over \$175 million. Representing and protecting the rights of some of the most marginalized and oppressed communities, Torres-Guillen has secured victories in federal and state courts.



NICOLE RODRIGUEZ VAN DYK

Principal
Bird, Marella, Boxer, Wolpert, Nessim, Drooms,
Lincenberg & Rhow, P.C.

Nicole Van Dyk routinely excels in high-stakes, high-profile, and headline-grabbing litigation. Her most recent achievement is on behalf of the MLB team, Los Angeles Angels, regarding a dispute with the Department of Justice. A November 2021 Court order criticized the government for its improper subpoena to the Angels and sided with Van Dyk’s declaration. She continues to be lead counsel for the Angels in all matters related to the death of pitcher Tyler Skaggs.

Van Dyk has achieved landmark victories for her clients. In July, she successfully protected her client’s Fourth and Fifth Amendment rights in the highly publicized U.S. Private Vaults seizure when the Judge denied the government’s motion to dismiss the case. Representing over 30 individual clients against the government, she is preventing the government from interfering with the property rights of box holders when property was unjustly confiscated.

YOKA | SMITH



YOKA | SMITH congratulates our firm’s managing partner, **ALICE CHEN SMITH** on being selected as one of the Women of Influence: Attorneys by the Los Angeles Business Journal.

yokasmith.com

Congratulations

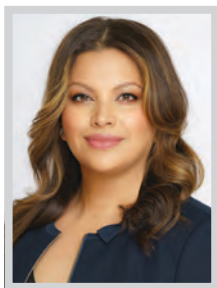


Koren Bell
Hilary Potashner

Women of Influence:
Attorneys

LARSON
larsonllp.com

WOMEN OF INFLUENCE: ATTORNEYS



HEIDY VAQUERANO
Partner
Fox Rothschild LLP

One of only a few Latina partners in entertainment law, Heidy Vaquerano is a skilled negotiator who closes lucrative transactions for musicians, actors, comedians, producers and managers. Despite the headwinds of the pandemic, Vaquerano made a major career move in October 2020 to join Fox Rothschild to broaden her horizons and better serve her clients.

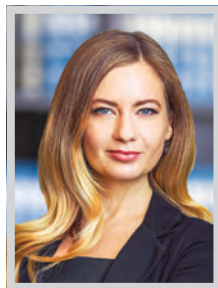
Vaquerano’s client list contains many high-profile entertainers, influencers and agencies. In recognition of her vast experience in entertainment, she is often asked to speak on different subjects. In September 2021, she addressed AmericanaFest 2021 regarding the hurdles artists face while selling their recording and publishing catalogs. She also spoke in January at the Women in Music Summit about how the catalog sales process works. She is also on the cutting edge of technology, serving as the Entertainment and Sports Law Department’s point person when it comes to negotiating NFT deals with major platforms like Yellow Heart and Ethernity.



TANYA VINER
Shareholder
Buchalter

Tanya Viner’s practice focuses on mergers and acquisitions, representing both the buyer and seller in large complex transactions ranging from the sale of closely-held family businesses to transactions in excess of a billion dollars. In addition to her mergers and acquisitions practice, Viner provides day-to-day counseling on a broad range of transactional and governance matters advising emerging growth companies on formation, venture capital financing, licensing, and employment issues, often acting as outside general counsel, and trusted advisor throughout every aspect of growth.

Viner advises clients on matters in nearly every major business sector, including consumer products, apparel, food and beverage, technology, beauty, financial services, manufacturing, and retail. Working with a close-knit and dedicated team of professionals known for excelling at client service, Viner’s clients appreciate her practical approach in offering both legal and business advice to ensure their goals are met and the deal gets done.



JENIFER WALLIS
Co-Managing Partner, Los Angeles Office
Munck Wilson Mandala

This past month, Munck Wilson Mandala partner Jenifer Wallis was promoted to co-managing partner of the Los Angeles office, making her the first woman at the firm to hold a managing partner title. Her commitment to growth and professional excellence has helped her firm expand through business development and recruiting efforts, adding 11 attorneys to the LA office in the past two years.

Wallis has been identified as a gamechanger and has demonstrated the highest commitment to expanding the firm brand in the LA market. Her knowledge of LA culture and her commitment to improving business processes has placed the firm’s LA office in the lead, ahead of other firm offices in both attorney headcount and DEI initiatives. Through her effective recruiting, business development, and mentorship efforts, the LA office boasts the highest percentage of female attorneys (more than 55 percent) and an increased number of minority attorneys.



DEBRA WONG YANG
Co-Chair, Crisis Management Practice Group
Gibson, Dunn & Crutcher LLP

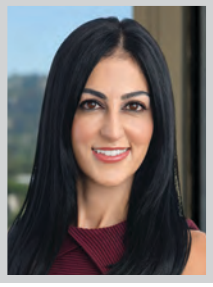
Debra Wong Yang has developed a broad based practice focused on matters stemming from crises to white collar defense to litigation. She has had a groundbreaking career – first Asian-American woman to serve as a U.S. Attorney, former California state judge, and, reflective of her broad practice and comprehensive abilities, current co-chair of Gibson Dunn’s Crisis Management Practice Group.

Given the depth of experience and record of success, Yang focuses part of her practice on strategic counseling and litigation. She leads critical representations, both high-profile and highly confidential, involving a variety of industries, economic sectors, regulatory bodies, law enforcement agencies, global jurisdictions and all types of proceedings. Her clients are in the private and public sectors and include the UCLA and the UC Regents, USC, Johnson & Johnson Board of Directors, MGM Resorts, and Archer Aviation.

We congratulate our partner
Heather Antoine
on her selection to the
Los Angeles Business Journal’s
prestigious list of
“Women of Influence: Attorneys.”



WOMEN OF INFLUENCE: ATTORNEYS

**PANTEA YASHAR***Partner*

Ervin Cohen & Jessup LLP

Pantea Yashar advises on, litigates, and resolves a wide range of real estate and business disputes, focusing on real property and projects in Southern California for large-scale commercial and residential landlords and developers. From protecting their rights to negotiating resolutions to contentious challenges involving developers, property owners, commercial leaseholders, and buyers and sellers in the nation's most expensive property markets, Yashar brings a strategic handling of complex matters.

Among Yashar's recent matters has been her work obtaining a favorable settlement for a client filing a lawsuit on behalf of other owners and leaseholders against a public municipality in connection with public nuisance and negligence issues. She also recently rigorously litigated and then favorably settled a case in the six-figure range involving a residential owner against previous sellers involving a single-family home that was sold to the owner without previous sellers disclosing a series of construction defect issues.

**ALICE YUAN***Partner*

Massumi + Consoli LLP

Alice Yuan has excelled both as a law firm attorney and as a public company executive. She is currently a partner of Massumi + Consoli LLP, where she not only provides outstanding service to discerning and acquisitive private equity clients but also dedicates her time to help grow and develop the firm as a whole, including by leading efforts for the firm in recruiting and business operations.

Having received her B.A. from Harvard and a J.D. from Stanford Law School, Yuan stands out for her ability to provide exceptional legal counsel on complex transactions in a manner that enables her clients to quickly make key business decisions. Her commitment to understanding each client's objectives and each target company's business in the context of deals, and her experience with balancing the priorities of multiple functional teams within an organization, have made her an invaluable partner to clients and colleagues alike.

**DEBORAH (DEBBIE) BIRNDORF ZEILER***Founder Partner*

Birndorf Law Offices, APC

Debbie Birndorf Zeiler has been practicing law for more than 25 years, including ten years at major law firms. She represents employers in all aspects of employment law, including defense of harassment and discrimination claims, wage claims, wage and hour class actions, disability claims, and misappropriation of trade secrets. She also provides counseling, drafts, and reviews employment contracts, severance agreements, employee handbooks, and personnel policies.

Zeiler earned her B.A. from UCLA, an M.B.A. from NYU, and her law degree from Washington University in St. Louis, where she graduated top of her class. In addition to her full-time practice, she teaches Legal Aspects of Employee Relations at UCLA Extension as part of the HR Certificate Program. Zeiler also serves on the Executive Commission of the Los Angeles Bar Association Labor & Employment Committee and co-chairs the Saturday Seminar Program.

**ANNITA ZHONG***Partner*

Irell & Manella LLP

A partner at Irell & Manella LLP, Annita Zhong focuses on patent litigation, contested patent office proceedings and licensing in the U.S., the European Union and China. She has deep experience litigating before federal and state courts, the International Trade Commission, arbitral panels and the Patent Trial and Appeal Board (PTAB).

Dr. Zhong's engineering and research background enables her to digest new technologies quickly and has proven valuable in delivering significant victories for clients in complex litigation. She is well versed in technical areas such as semiconductor fabrication and packaging, computer architecture, telecommunications, artificial intelligence, renewable energy, and chemicals and materials. Among recent victories, Dr. Zhong was a principal member of the team that secured an August 2021 \$300 million jury award for PanOptis in a patent suit against Apple involving 4G LTE technology used in iPhones and other devices.



Congratulates Los Angeles Managing Partner
SARAH KELLY-KILGORE

And all honorees of the *Los Angeles Business Journal's*
2022 WOMEN OF INFLUENCE: ATTORNEYS

Incremental Progress Continues for Diversity at Law Firms

NALP last year released its annual ‘Report on Diversity at U.S. Law Firms.’ The report, based on information from the 2020-2021 NALP Directory of Legal Employers (NDLE), shows that overall, women and people of color continued to make incremental progress in representation at major U.S. law firms in 2020 as compared with 2019.

The percentage of Black partners and Black associates exceeded 2% and 5%, respectively, for the first time in 2020; however, representation of Black lawyers in law firms still trails that of Asian and Latinx lawyers. After experiencing several years of declines following the Great Recession, the percentage of associates who are Black women in 2020 (3.04%) finally surpassed the 2009 figure of 2.93% for the first time as well, equating to an increase of just one-tenth of a percentage point over this 11-year period.

“Despite these increases,” wrote NALP executive director James G. Leipold in the report, “less than four percent of all partners are women of color — a figure that remains abysmally low due to the significant underrepresentation of both women and people of color at the partnership level and a pattern that holds true across all firm sizes and most jurisdictions. Worse, Black women and Latinx women each continued to represent less than 1% of all partners in U.S. law firms.”

Leipold urged the legal community to continue making strides toward an industry that is

diverse, inclusive, and equitable.

“The problems of racism and bias in American society are longstanding and run deep, dating back to our history of slavery, and the legal profession sits squarely in that history, but we are not bound by past practices and beliefs,” he wrote. “Let this time embolden all of us to renew our efforts to address more directly and more forcefully systemic bias and prejudice in the legal profession, and in particular the many ways that the profession has failed Black lawyers and the Black community.”

While progress is slow for representation of women and people of color, the number of LGBTQ lawyers in large law firms continues to rise steadily. The overall percentage of LGBTQ lawyers reported in 2020 increased by approximately one-third of a percentage point, rising to 3.31%. LGBTQ representation among summer associates continues to grow at a much faster pace, increasing by 0.8 percentage points, from 6.86% in 2019 to 7.68% in 2020.

Data for non-binary lawyers were collected within the NDLE for the first time in 2020. While reporting was still somewhat limited, overall counts are included in the Significant Findings section of the report.

Key Findings:

- The percentage of Black or African American associates surpassed 5% for the first time since NALP began collecting data and the share of associates who are Black women (3.04%)

finally exceeded the 2009 figure of 2.93%. Eleven years later, representation of Black or African American women at the associate level has increased by just one-tenth of a percentage point.

- After experiencing more than two decades of continuous growth, the percentage of Asian associates plateaued in 2020 at 12.12%, just below the 2019 figure of 12.17%.

• Despite modest growth in 2020, Black women and Latinx women each continued to represent less than 1% of all partners in U.S. law firms. The percentage of Black partners overall finally surpassed 2% for the first time since NALP began collecting data.

- The percentage of summer associates who are people of color increased by 1.2 percentage points, growing from 35.26% in 2019 to 36.48% in 2020.

- Women accounted for over half of all summer associates (53.62%) for the third year



in a row.

- The growth in the percentage of LGBTQ summer associates continued to outpace that of LGBTQ lawyers overall, climbing from 6.86% of all summer associates in 2019 to 7.68% in 2020.

NALP is an association of more than 2,500 legal career professionals who advise law students, lawyers, law offices, and law schools in North America and beyond. For additional information, visit NALP.org.

Los Angeles Business Journal – Women of Influence – Attorneys

All In Integrity + Intellect + Innovation = Influential

Influence springs from a rare combination of qualities that together motivates and inspires others to act. At Akerman, we are fortunate to have two leaders of influence who are **all in** when it comes to elevating our firm, our work, and our people. We congratulate our partners Marissa Alguire and Brenda Radmacher on their well-deserved recognition by *Los Angeles Business Journal* as 2022 Women of Influence - Attorney honorees. We are grateful for their extraordinary commitment to Akerman, to our profession, and to our Los Angeles community, which **inspires** us all.



Marissa Alguire



Brenda Radmacher